

Windows 11 Reimage Procedure

Requirements: minimum 32GB Flash Drive. USB 3.0 or better.

Recovery flash drive creation:

1. Download the latest Windows 11 reimage ISO from the “Tech Tools” website:

<https://techtools.qubicaamf.com/>

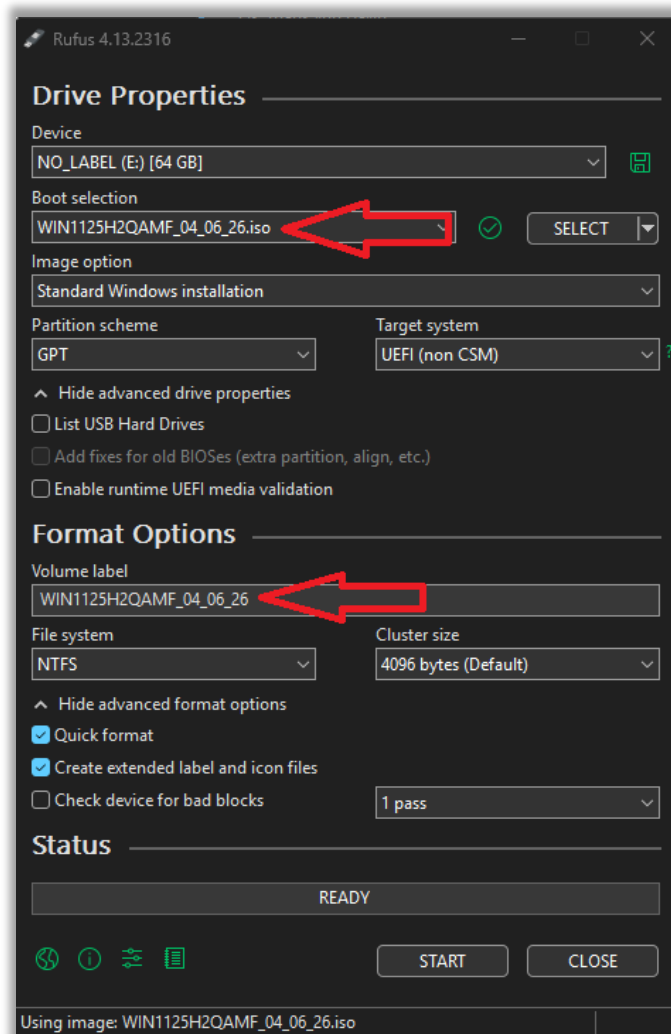
2. Download the latest version of RUFUS from the Tech Tools website.
3. Connect the flash drive to the PC that the image was downloaded onto.

4. Open RUFUS:

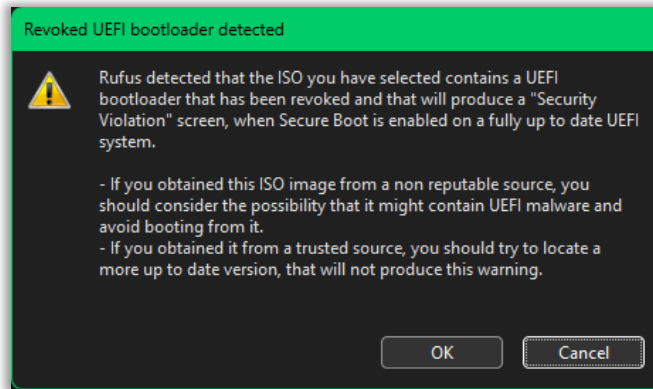
5. Drag & Drop the downloaded ISO file into “Boot selection” in the RUFUS window.

6. Under Format Options → Volume label – copy the name of the ISO file and paste as the Volume label. This is done so we know the date stamp of the image being used. It will be displayed as the name of the flash drive.

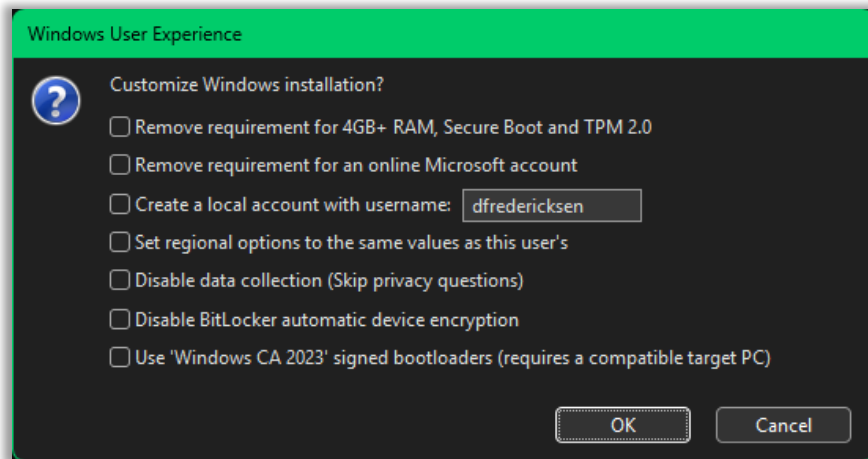
7. Click START.



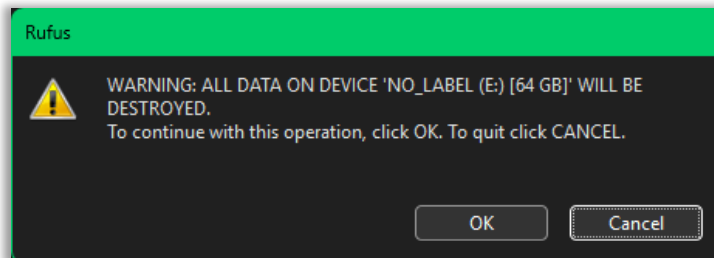
8. This popup will appear, click OK.



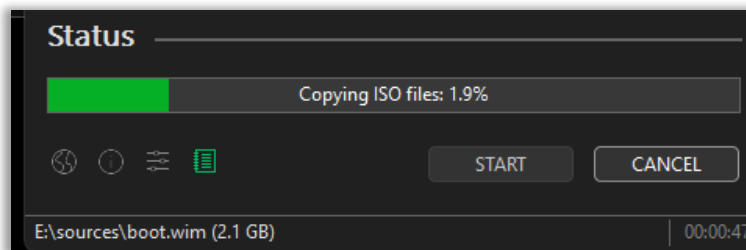
9. This popup will appear next. DO NOT check any boxes here. Just click OK.



10. Final popup, click OK.



11. Watch the progress bar at the bottom of RUFUS and wait for the process to be completed.



Using the recovery flash drive:

12. Once RUFUS has completed the recovery drive. Eject the drive from the PC and connect it to the PC needing the reimage.
13. Turn on the PC and start tapping F12. When you see the boot menu, stop tapping.
14. The flash drive may be listed 2 times in the boot list. Select the first option for the flash drive.
15. When the Windows screen is shown, press Shift+F10 at the same time to open the CMD window.

16. In the CMD window, type **diskpart** then press enter.
17. Type **list disk** then press enter again.
18. Here we see **Disk 0** and **Disk 1**. Note the size of each drive. **DO NOT select the flash drive.** We want to select the internal drive (shown here as the 476GB Disk 0)
19. At the prompt, type **sel disk 0** then press enter.
20. Type **clean** then press enter.

```

Administrator: X:\windows\system32\cmd.exe - diskpart
Microsoft Windows [Version 10.0.22621.2715]
(c) Microsoft Corporation. All rights reserved.

X:\sources>diskpart
Microsoft DiskPart version 10.0.22621.1

Copyright (C) Microsoft Corporation.
On computer: MINWINPC

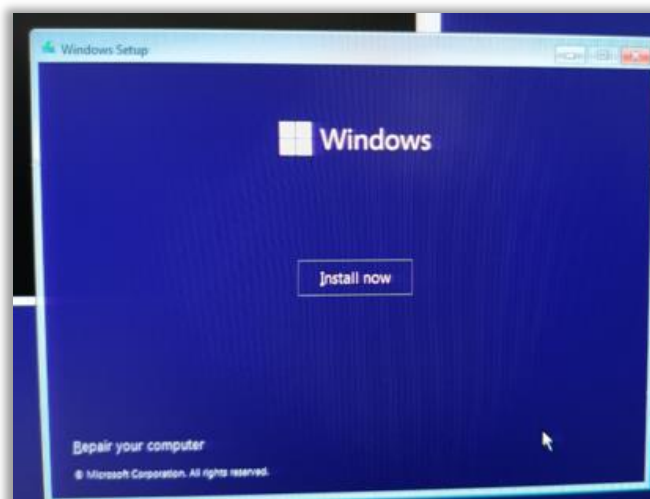
DISKPART> list disk
Disk ###  Status   Size     Free     Dyn  Gpt
-----  -
Disk 0    Online   476 GB   0 B      *
Disk 1    Online   238 GB   0 B      *

DISKPART> sel disk 0
Disk 0 is now the selected disk.

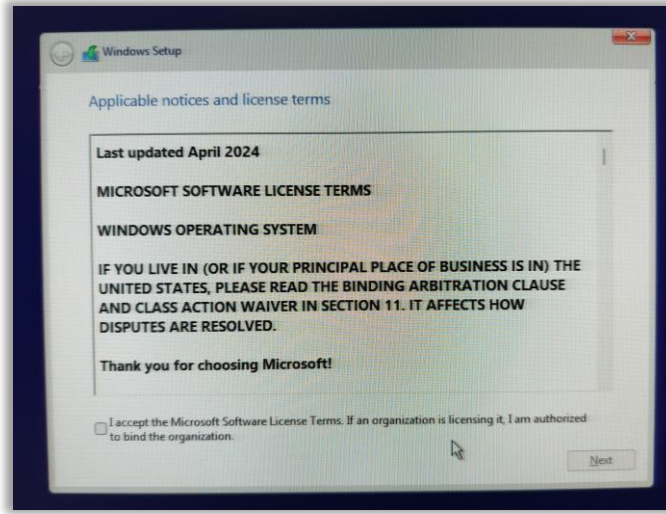
DISKPART> clean
DiskPart succeeded in cleaning the disk.

DISKPART>
    
```

21. Click back over to the Windows install window and click install now

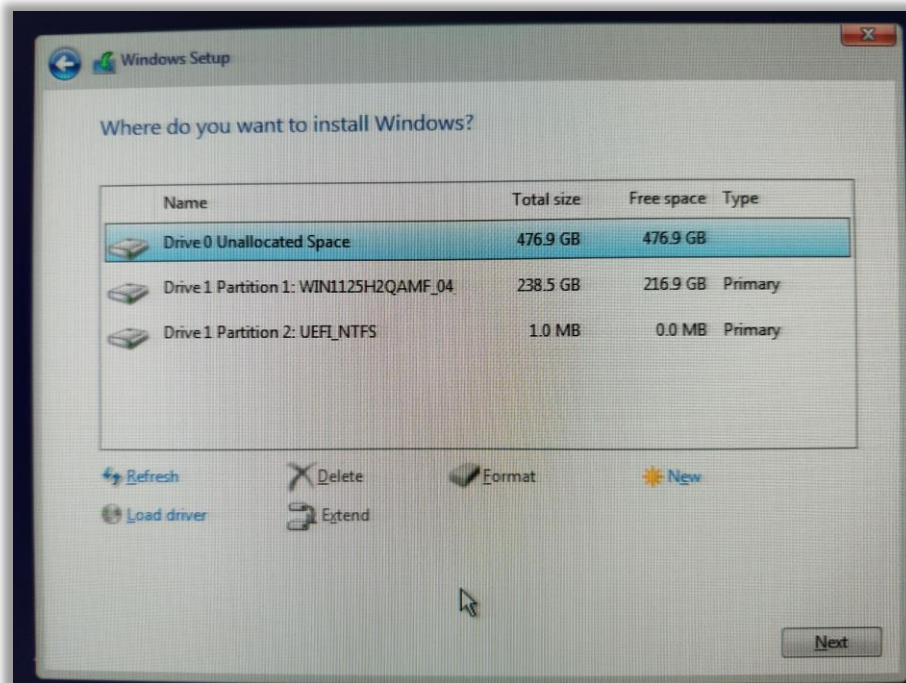


22. Check the box to accept the Terms, then click Next.



23. Next you will see a window that asks if you want to perform an 'Upgrade' or 'Custom' installation of Windows. Select 'Custom' install.

24. Here we see the internal drive 0 listed as unallocated space. Select the unallocated space, then click "Next".

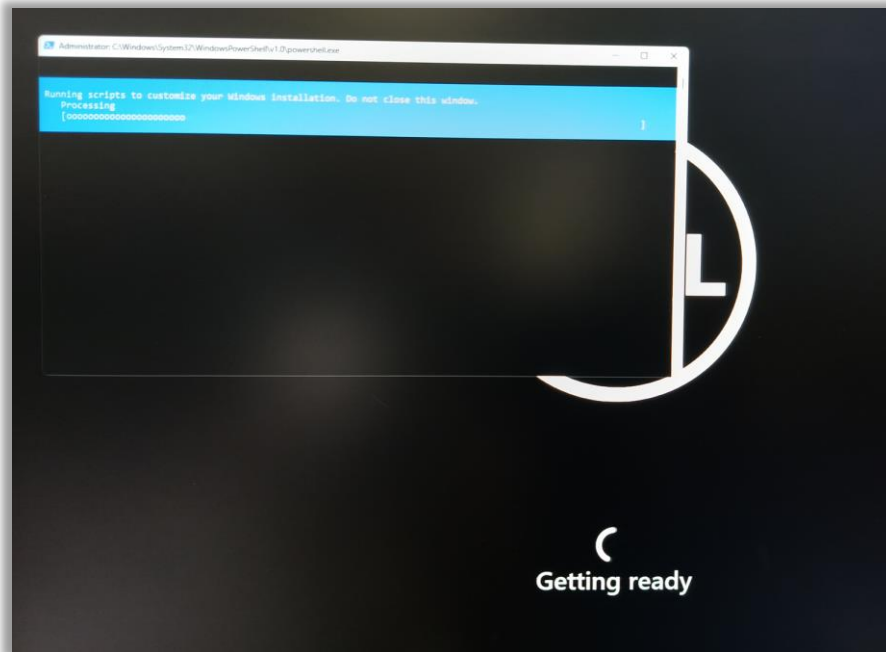


25. The installation process will start. This may take a few minutes, depending on the speed of the flash drive and the speed of the PC.

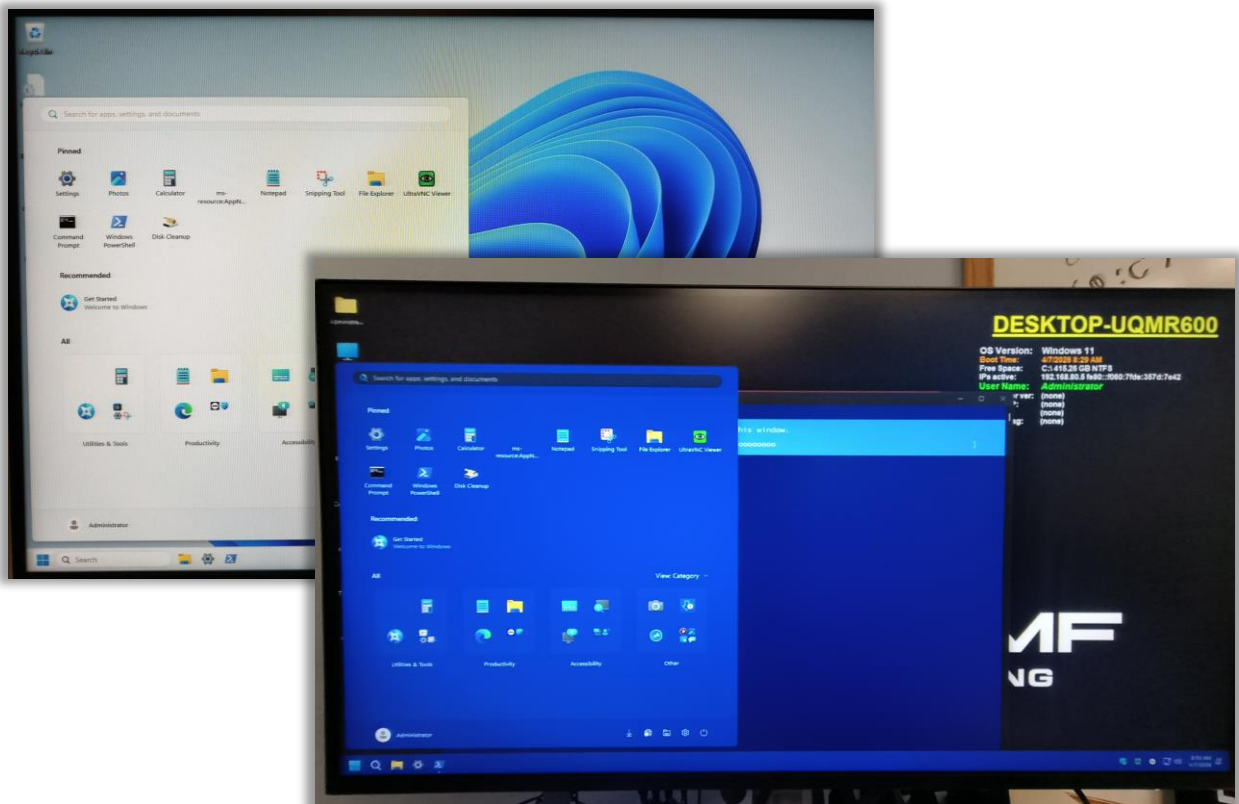
26. PC will reboot when the initial installation is complete and will state it is setting up devices.



27. Next there will be a Power Shell popup that will run scripts to customize the installation. This may take a few minutes, wait for them to complete. The PC will reboot and load to windows automatically.



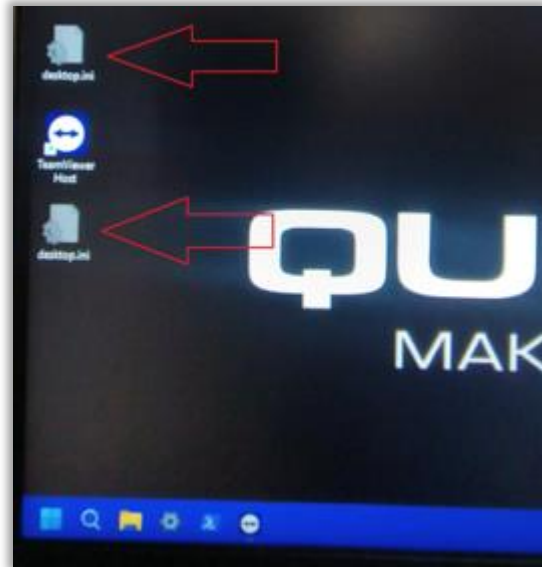
28. When Windows first loads, it will briefly look like an OEM desktop. Do not make any changes, you will see automated adjustments take place. The desktop color will change, icons will be adjusted, etc.



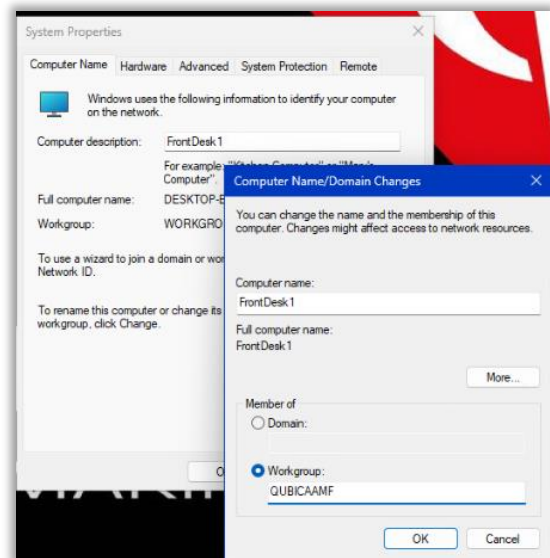
- When the automation is done, the Power Shell window will be gone. Click on the desktop to close the start menu window.

Additional setup after reimage:

- Once the reimage process is complete, you will be logged in as the built in Administrator user. Select the 2 desktop.ini files on the desktop and delete them, these are not needed now that the reimage is complete.
- Open the file explorer by clicking the folder icon on the task bar.
- Open the **C drive** → open the **setup** folder.
- Right click on **Winget.ps1** and choose “run with **Power Shell**”. This will install some applications and update others that need it. Wait for the process to finish before continuing.



- Set the name of the PC. Click search, type ‘**workgroup**’, select ‘**change workgroup name**’.
- Under Computer Description, fill in the name of the PC (FrontDesk1, BackOffice1, POS1, etc.)
- Use **CTRL+A**, **CTRL+C** to select that line and copy it.
- Click the **Change** button. In the Computer Name field, paste the name you copied.
- In the Workgroup field at the bottom, put in **QUBICAAMF**



- Click OK, then OK to the pop-up box, and OK to the next box.
- Finally Click apply and let the system reboot.
- Change the IP (if needed) from DHCP to static for the Conqueror network.
- Open File Explorer again, then in the C: drive, open the “BGInfo” folder.
- Right click servicetag2.ps1 and choose “**Run with Power Shell.**” This will create a txt file called “servicetag.” This is used by BGInfo to populate the information shown in the top right corner.
- The PC has now completed the reimage process. Install/setup any printers, pole display, fingerprint reader, or other peripheral devices, and install Conqueror.